

EXPO | GRADE 1



Latte  
09086812



Festive  
09089790



Viola  
09086845



Lemon  
09092620



Zest  
09092631



Raspberry  
09092642



Spirit  
09092675



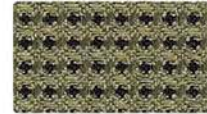
Sky  
09086834



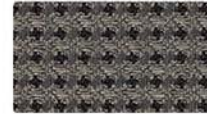
Sprout  
09092653



Oasis  
09092664



Leaf  
09086823



Fog  
09086801



Tuxedo  
09087725

FUSE | GRADE 1



Pepper  
09123387



Lunar  
09123354



Azurean  
09123299



Malted  
09123365



Pristine  
09123409



Cress  
09123321



Iris  
09123343



Walnut  
09123431



Saffron  
09123420



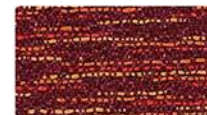
Morel  
09123376



Pimento  
09123398




Ginger  
09123332



Carmine  
09123310

# SPECIFICATIONS

Pattern	Fiber Content & Backing	Finish	Abrasion (D.R.)	Light-fastness	Approx. Repeats	Cleaning Code
54" FUSE	65% Post Industrial Recvclcd	Soil & Stain	100.000	40 Hrs.		WS
EXPO 	65% Post Industrial Recycled Polyester, 35% Post Consumer Recycled Polyester Acrylic Backing	Soil & Stain Resistant	102.000	60 Hrs. Class 4	1/4" L, 1/4" W	WS


\*ACT® Registered Certification Marks

## EXPLANATION OF ACT ICONS FOR UPHOLSTERY

### FIRE RETARDANCY

 Flammability testing determined as fabric's resistance to burning.  
**PASSES**  
 California 117

### COLORFASTNESS TO WET & DRY CROCKING

 Colorfastness to wet & dry crocking refers to the rubbing off of color from the fabric onto clothing, hands or other materials and can occur under wet or dry conditions.  
**PASSES**  
 AATCC 8-1974 Dry Crocking, Class 4 minimum; Wet Crocking, Class 3 minimum

### COLORFASTNESS TO LIGHT

 Colorfastness to light is the degree to which fabric will retain its color when exposed to light.  
**PASSES**  
 AATCC 16A-1974 or AATCC 16E-1976: Class 4 minimum at 40 hours  
 NOTE: Class 4 minimum at 60 hours is recommended for direct sunlight exposure situations

### PHYSICAL PROPERTIES

 3 physical property tests include: brush pill test to determine a fabric's pilling. Breaking/tensile strength is the ability of a fabric to withstand tension without breaking or tearing. Seam slippage is the pulling apart of fabrics at the seams.  
**PASSES**  
 Brush Pill ASTM D3511, 3-4 minimum  
 Breaking Strength ASTM D3597- D1682-64 (1975) 50 lbs. minimum in warp & weft  
 Seam Slippage ASTM D3597- D434-75 25 lbs. minimum in warp & weft

### ABRASION

Abrasion is the ability of a fabric to withstand damage from wear and rubbing. There is a general contract specification as well as a heavy duty specification.  
**PASSES**  
**a** General Contract ASTM 3597 modified (#10 cotton duck); 15,000 double rubs Wyzenbeek Method  
**A** Heavy Duty ASTM 3597 modified (#10 cotton duck); 30,000 double rubs Wyzenbeek Method or ASTM D4966 (with 21 oz. weight); 40,000 rubs Martindale Method

### CLEANING CODE DEFINITIONS

WS: Clean with water-based cleaning agents, foam or pure, water-free solvents (Energine, Carbona, Renuzit or other similar products). Vacuuming or light brushing is recommended to prevent dust and soil buildup.  
 W: Water-based foam, vacuum, brush.



GREENGUARD Children & Schools Indoor Air Quality Certified®, CA Section 01350 compliant, Eligible for CHPS Low-Emitting Material Credits.

**krug**  
 TEXTILES