

fabric specifications



pattern	content	width	weight	breaking strength	colorfastness to light	flammability
Dune	100% polyester	66" usable	11.0 ± 1.0 oz./lin. yd.	ASTM D5034 160 lbf. warp, 110 lbf. fill	AATCC 16.3 grade 4 min. at 40 hours	ASTM E-84 class 1 or A
Metallation	56% post-consumer recycled polyester 44% polyester	66" usable	15.2 ± 0.5 oz./lin. yd.	ASTM D5034 150 lbf. min. warp, 150 lbf. min. fill	AATCC 16.3 grade 4 min. at 40 hours	ASTM E-84 class 1 or A
Binary	100% post-consumer recycled polyester	66" usable	11.0 ± 1.0 oz./lin. yd.	ASTM D3597-02 100 lbs. min. warp, 100 lbs. min. fill	AATCC 16-2004 min. 40 hours	ASTM E-84-10 class 1 or A state of CA. tech bulletin, 117 sec. E (CS-191-53) passes
Tweed	Terratex® 25% post-consumer recycled polyester 75% pre-consumer recycled polyester	66" usable	11.7 ± 1.0 oz./lin. yd.	ASTM D5034 225 lbf. min. warp, 175 lbf. min. fill	AATCC 16.3 grade 4 min. at 40 hours	ASTM E-84 class 1 or A
Broadcast	100% polyester	66" usable	9.5 ± 0.5 oz./lin. yd.	ASTM D5034 150 lbf. min. warp, 100 lbf. min. fill	AATCC 16.3 grade 4 min. at 40 hours	ASTM E-84 class 1 or A
Crosstown	Terratex® 23% post-consumer recycled polyester 77% pre-consumer recycled polyester	66" usable	13.6 ± 1.0 oz./lin. yd.	ASTM D5034 250 lbf. min. warp, 150 lbf. min. fill	AATCC 16.3 grade 4 min. at 40 hours	ASTM E-84 class 1 or A
Cascade	100% post-consumer recycled polyester	66" usable	11.0 ± 1.0 oz./lin. yd.	ASTM D3597-02 100 lbs. min. warp, 100 lbs. min. fill	AATCC 16-2004 min. 40 hours	ASTM E-84 class 1 or A state of CA. tech bulletin, 117 sec. E (CS-191-53) passes

NOTE: Dye lots may vary slightly from samples shown.

panel fabric | grade two



dune



erosion F2382



drift F2392



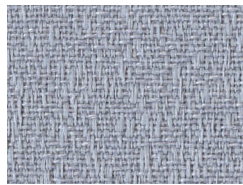
shell F2322



boardwalk F2332



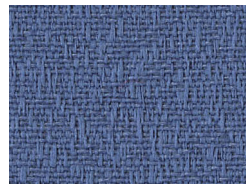
deep night F2312



clear sky F2342



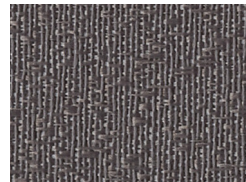
caribbean F2352



basin F2212



sea grass F2202



raven F2302

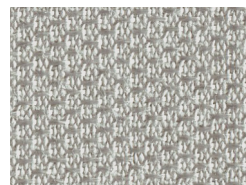


darkness F2372

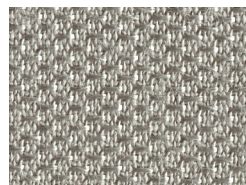
metallation



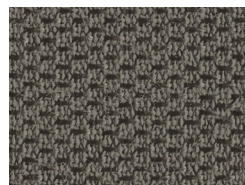
chrome F3202



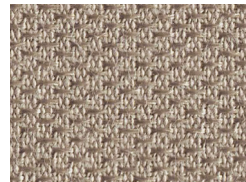
stainless F3212



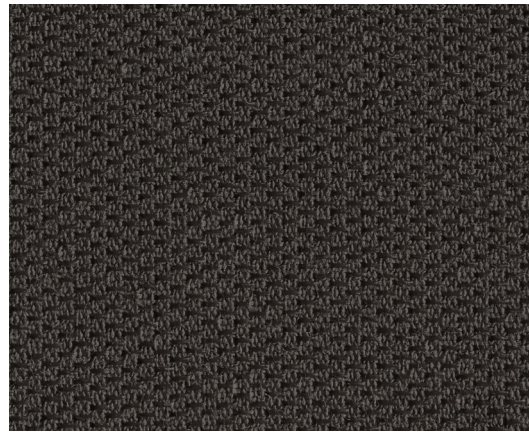
polished pewter F3222



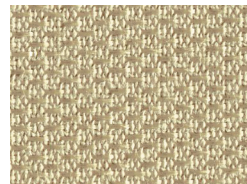
dark annealed F3242



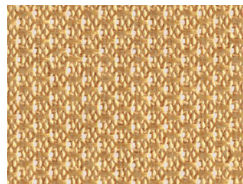
welded steel F3252



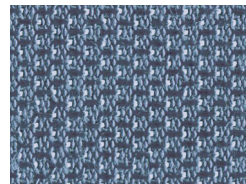
stove pipe F3232



bronze F3262



18 karat F3272



fired titanium F3282

binary



blueray F5202



chipset F5212



modem F5222

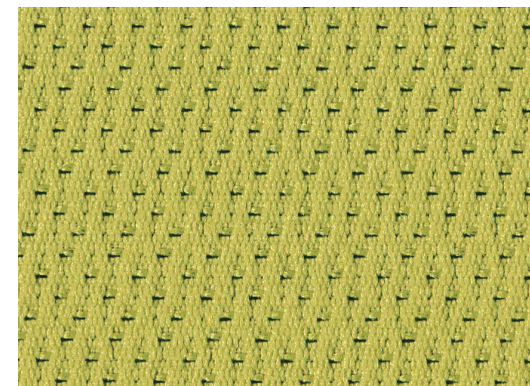


optical F5232

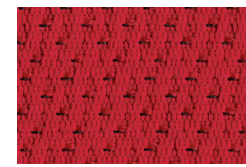


matter F5242

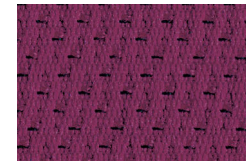
tweed



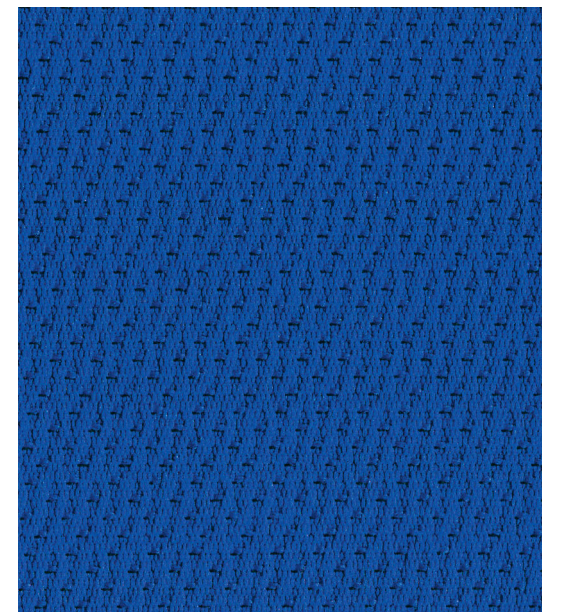
leaf F9202



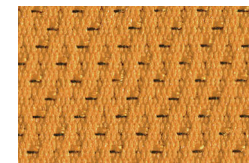
lipstick F9232



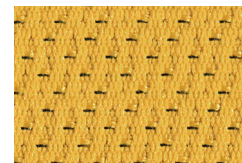
raspberry F9242



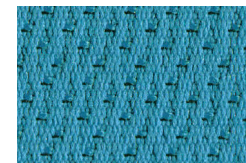
royal blue F9262



orange F9212

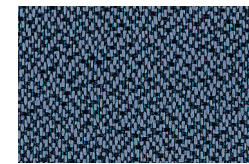


maize F9222

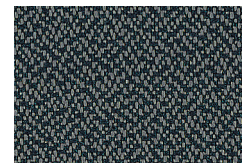


spa F9252

broadcast



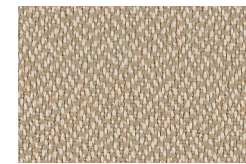
chicory F0202



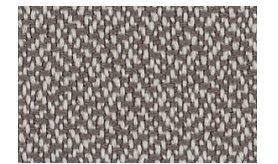
graphite F0212



mink F0222



serengeti F0232



shade F0242

crosstown



trompe d'oeil F1202



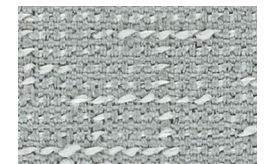
stucco F1222



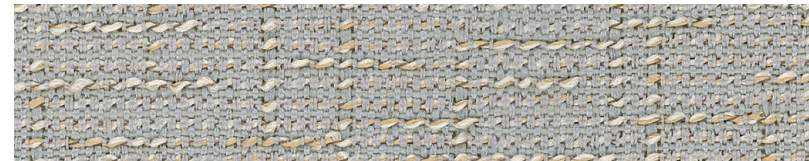
buff F1252



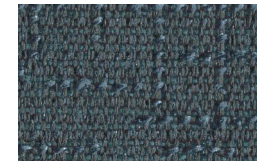
charcoal F1262



sterling F1212



fieldstone F1272



mystic F1282

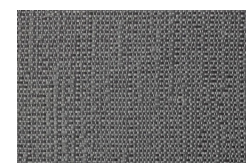
cascade



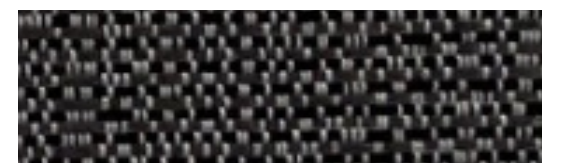
stack F4202



gorge F4222



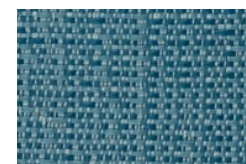
bauxite F4232



igneous F4262



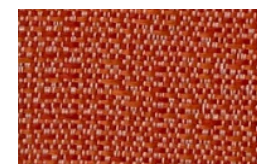
alluvium F4212



aquifer F4252



peak F4272



plutonic F4282