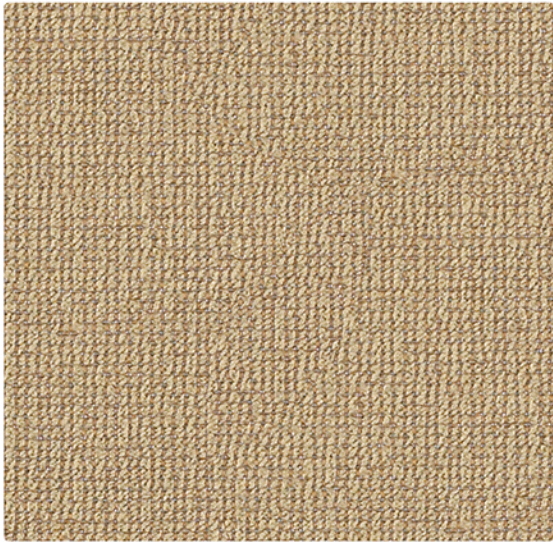


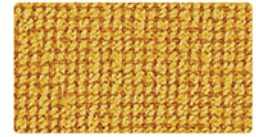
SOLACE | GRADE 3



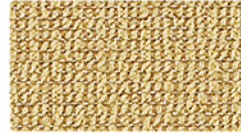
Fossil
09127072



Ivory
09127105



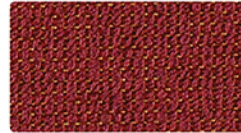
Gilded
09127083



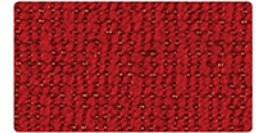
Almond
09126984



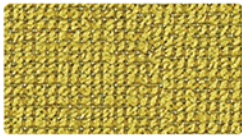
Blaze
09127006



Peony
09127171



Carmine
09127017



Pear
09127204



Earth
09127050



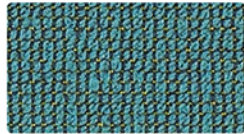
Cinder
09127039



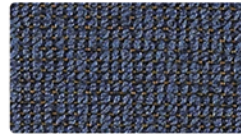
Mineral
09127138



Celadon
09127028



Azul
09126995



Indigo
09127094

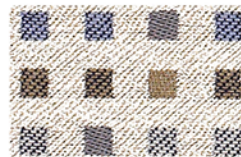


Ebony
09127061

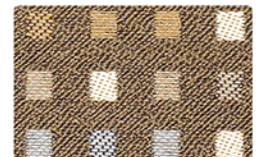
KINNEY | GRADE 3



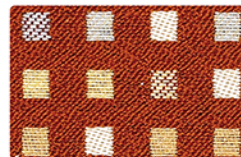
Steel
09135432



Glacier
09135531



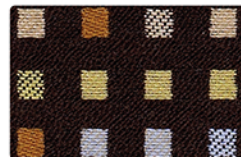
Frappé
09135388



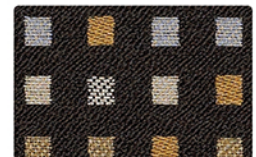
Nectar
09135421



Valentine
09135443





Coffee
09135377



Mineral
09135410

SPECIFICATIONS

Pattern	Fiber Content & Backing	Finish	Abrasion (D.R.)	Light-fastness	Approx. Repeats	Cleaning Code
55" SOLACE 	49% Polyester, 41% Post Industrial Recycled Polyester, 10% Post Consumer Recycled Polyester Acrylic Backing	Soil & Stain Resistant	100,000	40 Hrs. Class 4		WS
60" KINNEY 	56% Post Consumer Recycled Polyester, 44% Polyester Acrylic Backing	Soil & Stain Resistant	100,000	40 Hrs. Class 4	5 3/4" L, 5" W	WS

*ACT® Registered Certification Marks

EXPLANATION OF ACT ICONS FOR UPHOLSTERY

FIRE RETARDANCY



Flammability testing determined as fabric's resistance to burning.

PASSES
California 117

COLORFASTNESS TO WET & DRY CROCKING



Colorfastness to wet & dry crocking refers to the rubbing off of color from the fabric onto clothing, hands or other materials and can occur under wet or dry conditions.

PASSES
AATCC 8-1974 Dry Crocking, Class 4 minimum; Wet Crocking, Class 3 minimum

COLORFASTNESS TO LIGHT



Colorfastness to light is the degree to which fabric will retain its color when exposed to light.

PASSES
AATCC 16A-1974 or AATCC 16E-1976; Class 4 minimum at 40 hours
NOTE: Class 4 minimum at 60 hours is recommended for direct sunlight exposure situations

PHYSICAL PROPERTIES



3 physical property tests include: brush pill test to determine a fabric's pilling. Breaking/tensile strength is the ability of a fabric to withstand tension without breaking or tearing. Seam slippage is the pulling apart of fabrics at the seams.

PASSES
Brush Pill ASTM D3511, 3-4 minimum
Breaking Strength ASTM D3597-D1682-64 (1975) 50 lbs. minimum in warp & weft
Seam Slippage ASTM D3597-D434-75 25 lbs. minimum in warp & weft

ABRASION

Abrasion is the ability of a fabric to withstand damage from wear and rubbing. There is a general contract specification as well as a heavy duty specification.



General Contract

PASSES
ASTM 3597 modified (#10 cotton duck); 15,000 double rubs Wyzenbeek Method



Heavy Duty

ASTM 3597 modified (#10 cotton duck); 30,000 double rubs Wyzenbeek Method or ASTM D4966 (with 21 oz. weight); 40,000 rubs Martindale Method

CLEANING CODE DEFINITIONS

WS: Clean with water-based cleaning agents, foam or pure, water-free solvents (Energine, Carbona, Renuzit or other similar products). Vacuuming or light brushing is recommended to prevent dust and soil buildup.



GREENGUARD Children & Schools Indoor Air Quality Certified®. CA Section 01350 compliant. Eligible for CHPS Low-Emitting Material Credits.

For memo samples please contact.

MOMENTUM
T E X T I L E S

Canada 905-670-5002

Toll Free 800-366-6839

memosamples.com

krug
T E X T I L E S