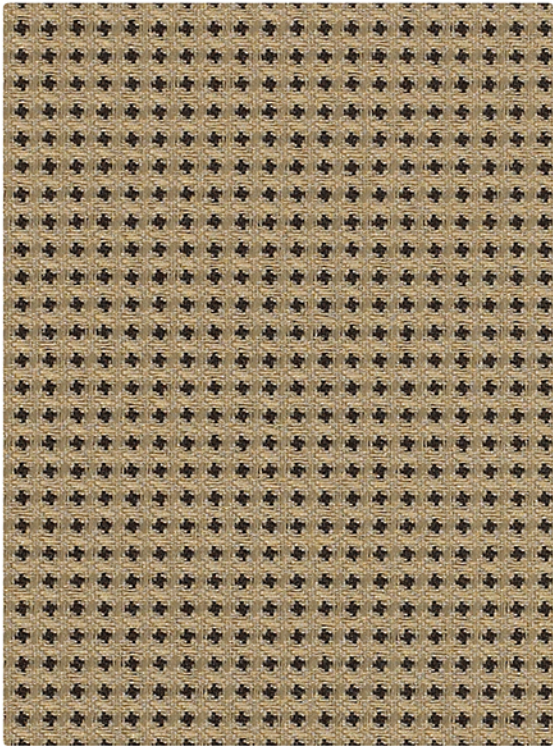


EXPO | GRADE 1



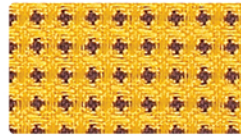
Latte
09086812



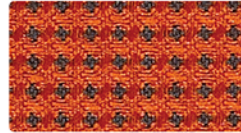
Festive
09089790



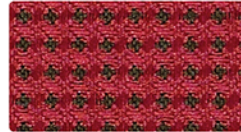
Viola
09086845



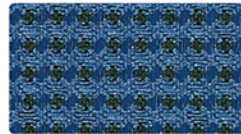
Lemon
09092620



Zest
09092631



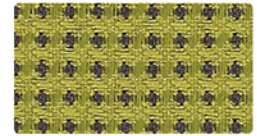
Raspberry
09092642



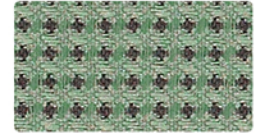
Spirit
09092675



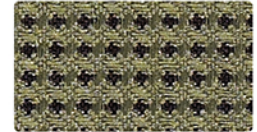
Sky
09086834



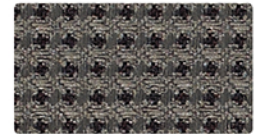
Sprout
09092653



Oasis
09092664



Leaf
09086823

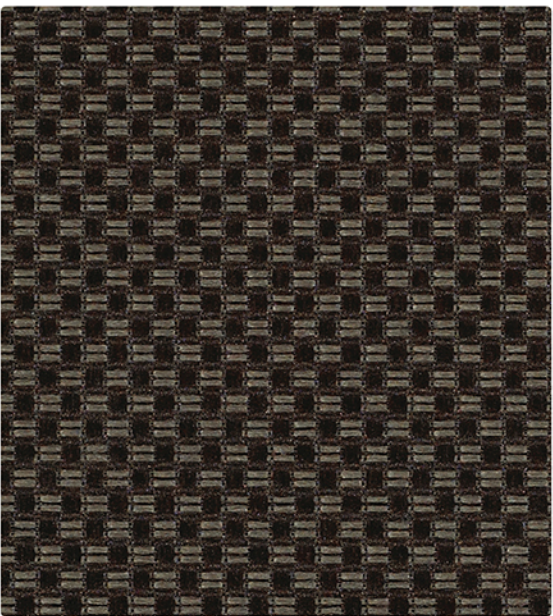


Fog
09086801



Tuxedo
09087725

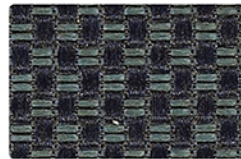
PERK | GRADE 1



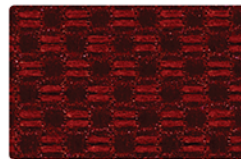
Flint
09075933



Dijon
09075988



Patriot
09076032



Crimson
09076054



Sesame
09075944





Cedar
09075922



Ebony
09079761

SPECIFICATIONS

54" Pattern	Fiber Content & Backing	Finish	Abrasion (D.R.)	Light-fastness	Approx. Repeats	Cleaning Code
EXPO 	65% Post Industrial Recycled Polyester, 35% Post Consumer Recycled Polyester Acrylic Backing	Soil & Stain Resistant	102,000	60 Hrs. Class 4	1/8" L, 1/8" W	WS
PERK 	100% Polyester Acrylic Backing	Soil & Stain Resistant	102,000	40 Hrs. Class 5	1/4" L, 1/4" W	WS

*ACT® Registered Certification Marks

EXPLANATION OF ACT ICONS FOR UPHOLSTERY

FIRE RETARDANCY

 Flammability testing determined as fabric's resistance to burning.

PASSES
California 117

COLORFASTNESS TO WET & DRY CROCKING

 Colorfastness to wet & dry crocking refers to the rubbing off of color from the fabric onto clothing, hands or other materials and can occur under wet or dry conditions.


PASSES
AATCC 8-1974 Dry Crocking, Class 4 minimum; Wet Crocking, Class 3 minimum

COLORFASTNESS TO LIGHT

 Colorfastness to light is the degree to which fabric will retain its color when exposed to light.

PASSES
AATCC 16A-1974 or AATCC 16E-1976; Class 4 minimum at 40 hours
NOTE: Class 4 minimum at 60 hours is recommended for direct sunlight exposure situations

PHYSICAL PROPERTIES


 3 physical property tests include: brush pill test to determine a fabric's pilling. Breaking/tensile strength is the ability of a fabric to withstand tension without breaking or tearing. Seam slippage is the pulling apart of fabrics at the seams.

PASSES
Brush Pill ASTM D3511, 3-4 minimum
Breaking Strength ASTM D3597-D1682-64 (1975) 50 lbs. minimum in warp & weft
Seam Slippage ASTM D3597-D434-75 25 lbs. minimum in warp & weft

ABRASION

Abrasion is the ability of a fabric to withstand damage from wear and rubbing. There is a general contract specification as well as a heavy duty specification.

 **General Contract** **PASSES** ASTM 3597 modified (#10 cotton duck); 15,000 double rubs Wyzenbeek Method

 **Heavy Duty** ASTM 3597 modified (#10 cotton duck); 30,000 double rubs Wyzenbeek Method or ASTM D4966 (with 21 oz. weight); 40,000 rubs Martindale Method

CLEANING CODE DEFINITIONS

WS: Clean with water-based cleaning agents, foam or pure, water-free solvents (Energine, Carbona, Renuzit or other similar products). Vacuuming or light brushing is recommended to prevent dust and soil buildup.



GREENGUARD Children & Schools Indoor Air Quality Certified®. CA Section 01350 compliant. Eligible for CHPS Low-Emitting Material Credits.

For memo samples please contact.

MOMENTUM
T E X T I L E S

Canada 905-670-5002
Toll Free 800-366-6839
memosamples.com

krug
TEXTILES

solutions@krug.ca | www.krug.ca | 1.888.578.5784