

**CURRENT | GRADE 3**



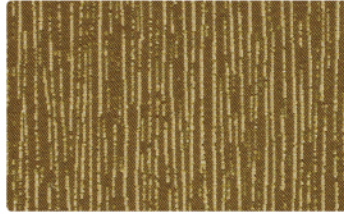
Birch  
09134893



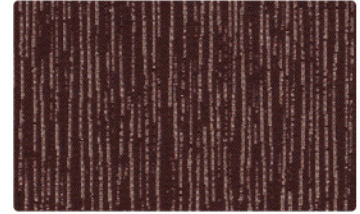
Pecan  
09134948



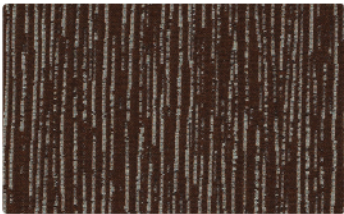
Birch  
09134893



Moss  
09134937



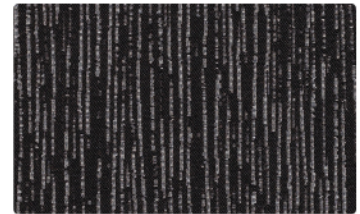
Plum  
09134959



Espresso  
09134926



Cadet  
09134904



Eclipse  
09134915

**CLANG | GRADE 3**



Malt  
09134860



Amber  
09134805



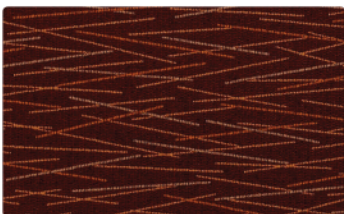
Malt  
09134860



Cress  
09134838



Clove  
09134827



Claret  
09134816



Flint  
09134849



Raven  
09134871

# SPECIFICATIONS

56" Pattern	Fiber Content & Backing	Finish	Abrasion (D.R.)	Light-fastness	Approx. Repeats	Cleaning Code
CURRENT 	100% Post Consumer Recycled Polyester Acrylic Backing	Soil & Stain Resistant	100,000	40 Hrs. Class 4	13" L, 7 1/4" W	WS
CLANG 	73% Post Consumer Recycled Polyester, 27% Polyester Acrylic Backing	Soil & Stain Resistant	100,000	40 Hrs. Class 4	16 3/4" L, 7 1/4" W Shown Railroaded	WS

\*ACT® Registered Certification Marks

## EXPLANATION OF ACT ICONS FOR UPHOLSTERY

### FIRE RETARDANCY



Flammability testing determined as fabric's resistance to burning.

**PASSES**  
California 117

### COLORFASTNESS TO WET & DRY CROCKING



Colorfastness to wet & dry crocking refers to the rubbing off of color from the fabric onto clothing, hands or other materials and can occur under wet or dry conditions.

**PASSES**  
AATCC 8-1974 Dry Crocking, Class 4 minimum; Wet Crocking, Class 3 minimum

### COLORFASTNESS TO LIGHT



Colorfastness to light is the degree to which fabric will retain its color when exposed to light.

**PASSES**  
AATCC 16A-1974 or AATCC 16E-1976; Class 4 minimum at 40 hours  
NOTE: Class 4 minimum at 60 hours is recommended for direct sunlight exposure situations

### PHYSICAL PROPERTIES



3 physical property tests include: brush pill test to determine a fabric's pilling. Breaking/tensile strength is the ability of a fabric to withstand tension without breaking or tearing. Seam slippage is the pulling apart of fabrics at the seams.

**PASSES**  
Brush Pill ASTM D3511, 3-4 minimum  
Breaking Strength ASTM D3597-D1682-64 (1975) 50 lbs. minimum in warp & weft  
Seam Slippage ASTM D3597-D434-75 25 lbs. minimum in warp & weft

### ABRASION

Abrasion is the ability of a fabric to withstand damage from wear and rubbing. There is a general contract specification as well as a heavy duty specification.



**General Contract** ASTM 3597 modified (#10 cotton duck); 15,000 double rubs Wyzenbeek Method



**Heavy Duty** ASTM 3597 modified (#10 cotton duck); 30,000 double rubs Wyzenbeek Method or ASTM D4966 (with 21 oz. weight); 40,000 rubs Martindale Method

### CLEANING CODE DEFINITIONS

WS: Clean with water-based cleaning agents, foam or pure, water-free solvents (Energine, Carbona, Renuzit or other similar products). Vacuuming or light brushing is recommended to prevent dust and soil buildup.



GREENGUARD Children & Schools Indoor Air Quality Certified®. CA Section 01350 compliant. Eligible for CHPS Low-Emitting Material Credits.

For memo samples please contact.

**MOMENTUM**  
T E X T I L E S

Canada 905-670-5002  
Toll Free 800-366-6639  
memosamples.com

**krug**  
TEXTILES

solutions@krug.ca | www.krug.ca | 1.888.578.5784